

Huawei termékek Cisco-s szemmel

Balla Attila

CCIE #7264

balla.attila@synergon.hu

Tartalom

- LAN switch-ek
- Access Router-ek
- High-end Router-ek

Huawei LAN switch portfolio

Core Routing Switch Quidway S8000/6000



Quidway S6503/6506/6506R

Quidway S6502

S8505

S8508

Quidway S8512

Gigabit Routing Switch Quidway S5000



Quidway S5024/5012

Quidway S5600

L3 FE Workgroup Switch



Quidway S3900EI/S3500

Quidway S3528G/P

Quidway S3552G/P

S3552F/F-HI

L2 FE Workgroup Switch



Quidway S3026C/G/T

Quidway S3050C

Quidway S3900SI

Desktop Switch Quidway S2000



Quidway S2008EI

Quidway S2016EI

Quidway S2403H-EI

Layer2 LAN switch-k

Quidway

- S2000
 - S2008 - 8 FE
 - S2016 - 16 FE + 1 modul
 - S2403 - 25 FE + 1 modul
- S3000
 - S3026 - 24 FE + 2 modul
 - S3026-PWR
 - S3050C - 48 FE + 2 modul
- S5000
 - S5012G - 12 GE-T / 4 GBIC
 - S5012T - 4 GE-T / 12 GBIC
 - S5024G - 20 GE-T / 4 GBIC

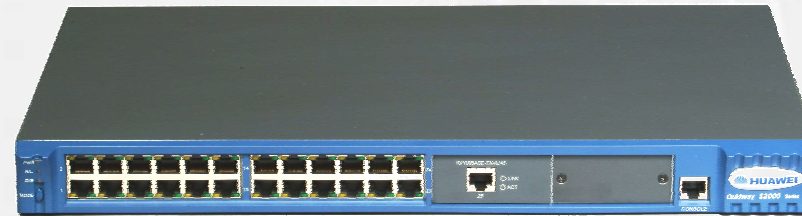
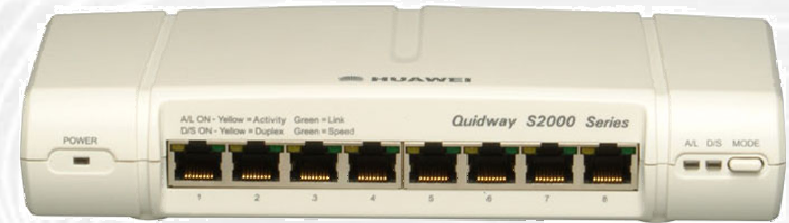
Catalyst

- C2940
 - 8 10/100 + FX/GE-T
- C2950
 - 12/24/48 10/100
- C2960
 - 24/48 10/100 + 4 SFP
 - 24 10/100/1000 + 4 SFP
- C2970
 - 24 10/100/1000 + 4 SFP

L2 feature-k

S2000

- Wire speed forwarding
- 512 VLAN
- 4 queue/port
- Rate-limit – 64k
- No fan
- IGMP snooping
- SSH
- Modul
 - 100BaseFX
 - PoE – 2016



L2 feature-k

S3000

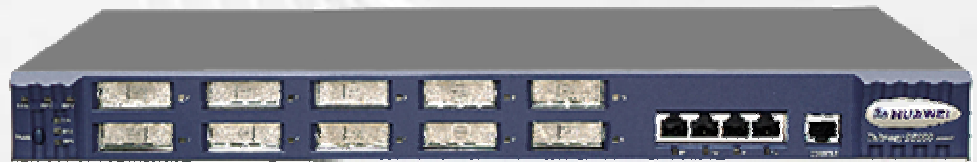
- Wire speed forwarding
- 256 VLAN
- 8 queue/port
- Rate-limit
 - 1M/FE, 8M/GE
- IGMP snooping
- 16 device stackable
- SSH
- Modul
 - GE-X
 - 100BaseFX



L2 feature-k

S5000

- Wire speed forwarding
- 4k VLAN
- 8 queue/port
- Rate-limit – 1M
- IGMP snooping
- 16 device stackable



S3900 series



ENHANCED
IRF Distributed Networking

STANDARD
Cost Effective
Networking



Fiber	24 x FX 2 x SFP GE Slots 2 x 10/100/1000
Copper	24 x 10/100 4 x SFP GE Slots 48 x 10/100 4 x SFP GE Slots
PoE	+ 2 Power over Ethernet Models
Copper	24 x 10/100 2 x 10/100/1000 2 x SFP GE Slots 24 x 10/100 4 x SFP GE Slots 48 x 10/100 4 x SFP GE Slots

MEMBERS OF SYNERGON GROUP



Layer3 LAN switch-ek

Quidway

- S3900-SI
 - S3928-SI – 24 FE + 4 SFP
 - S3952-SI – 48 FE + 4 SFP
 - RIP, 1k IP prefix

- S3900-EI
 - S3928-EI/PWR - PoE
 - S3952-EI/PWR - PoE
 - S3928F-EI
 - 24 FX, 2 GE-T, 2 GBIC
 - RIP, OSPF, 6k IP prefix

Catalyst

- C3560
 - 24/48 10/100/1000 + 4SFP
 - 24/48 10/100 + 2/4 SFP
 - PoE

- C3750
 - 24/48 10/100/1000 + 4 SFP
 - 12 SFP
 - 24FX + 2 SFP
 - 16 10/100/1000 + XENPAK
 - PoE
 - 32Gbps stacking!
 - 11k IP Prefix, BGP!

S3900 L2/L3 feature-k

- L2/L3 wire-speed forwarding
- 4K VLAN
- EI: AC/DC support
- Multicast
 - IGMP Snooping
 - PIM (EI)
- EI: QinQ
- Routing table
 - 1k for SI
 - 8k for EI
- S39xx-PWR
 - 802.3af
- 8 device stackable
- SSH

S5600



S5624P



S5648P



S5624F



Layer3 LAN switch-ek

S5600 series

- S5624P, S6524F
 - 24 10/100/1000 + 4SFP (Combo) + modul
 - 24 SFP + 4 10/100/100 (Combo) + modul
 - 65.5Mpps
- S5648P
 - 48 10/100/1000 + modul
 - 102Mpps

Pro

- Modul:
 - 8port SFP, 1-2 10GE
- 48Gbps stacking!
- PoE

Catalyst 4948 series

- C4948
 - 48 10/100/1000 + 4 SFP (Combo)
 - 72Mpps
- C4948-10GE
 - 48 10/100/1000 + 2 X2
 - 102Mpps

Pro

- BGP!

L3 Feature-k

S5600

- 16k MAC address
- 4k VLAN
- 16k routing table
 - RIP, OSPF
- Multicast
 - PIM SM/DM
 - IGMP/IGMP snooping
- QoS
 - 8 queue/port
 - Rate-limit
 - flow/port
- Security
 - 802.1x, ACL

C4948

- 32k MAC address
- 4k VLAN
- 32k routing table
 - RIP, EIGRP, OSPF, BGP
- Multicast
 - PIM, SSM, DVMRP
 - IGMP snooping
- QoS
 - 4 queue/port
 - Rate-limit
 - Shaping
- Security
 - 802.1x, ACL...

- IRF – Intelligent Resilient Framework
 - DDM – Distributed Device Management
 - DRR – Distributed Resilient Routing
 - DLA – Distributed Link Aggregation

Roadmap

- **S3100**
 - S3108T/C
 - S3116T/C
 - S3126T/C
 - Nincs ventilátor
 - 2006Q1

- **S3900-V6**
 - IPv6, BGP
 - 2007Q1

- **S5500-V6**
 - IPv6, BGP
 - 2007Q1

- **S5100**
 - S5124P-EI
 - 24 GE-T, 4 SFP Combo
 - S5148P-EI
 - 48 GE-T, 4 SFP Combo
 - S5126C-EI
 - 24 GE-T, 4 SFP Combo
 - 2db 10GE
 - S5150C-EI
 - 48 GE-T, 4 SFP Combo
 - 2db 10GE
 - 4 Gbps stack
 - 2006Q2

Moduláris LAN switch-ek

Quidway

■ S6500

- S6502 – 2 slot
 - S6503 – 3+1 slot
 - S6506 – 6+1 slot
 - S6506R – 6+2 slot
- 8Gbps/slot + 2XG bus

■ Interface-k

- 48 10/100 – PoE
- 24/48 100BaseFX
- 4/8/20/48 GE – PoE, XG
- 1/2/4 port 10GE – XG

Catalyst

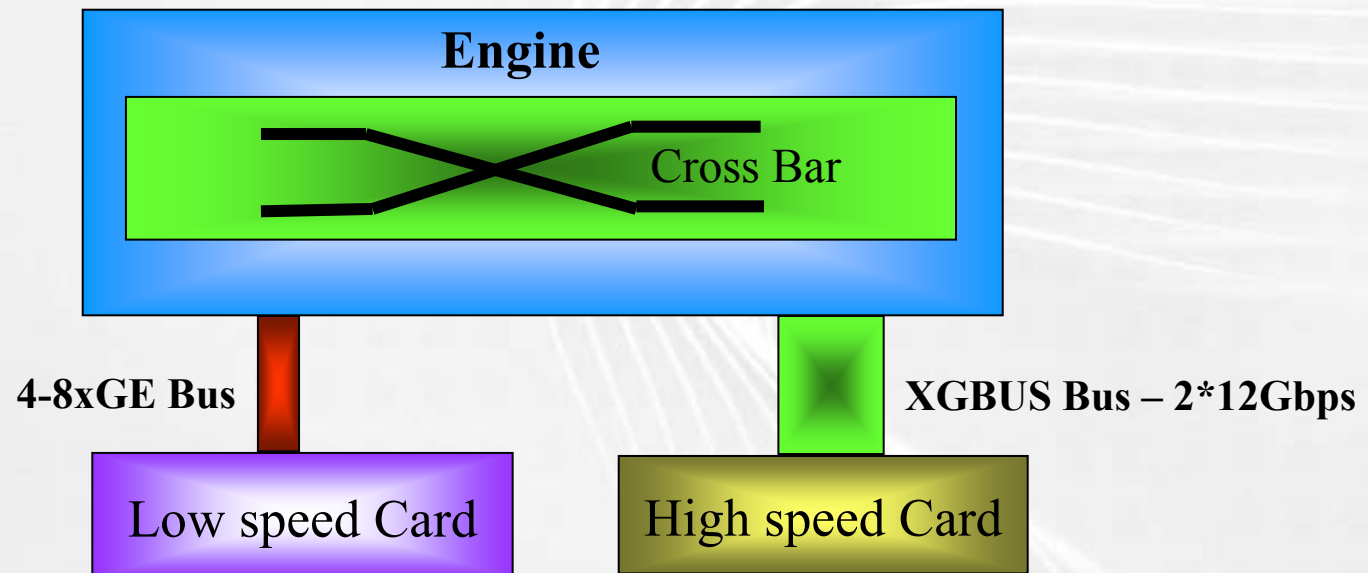
■ C4500

- C4503 – 2+1 slot
 - C4506 – 5+1 slot
 - C4507R – 5+2 slot
 - C4510R – 8+2slot
- 6Gbps/slot

■ Interface-k

- 24/48 10/100 – PoE
- 32 10/100 + 2GBIC
- 2/6/18/24/48 GE
- 1port 10GE

S6500 architektúra



For low speed card
With limited uplink
bandwidth, support wire-
speed in-board

For high speed card
With up to 40Gbps/slot,
support wire-speed in-
board

Supervisor-k

- **Salience III Lite**
 - 48Gbps / 36Mpps
- **Salience III Edge**
 - 96Gbps / 72 Mpps
- **Salience III**
 - 192Gbps / 126Mpps
 - 2 slot XG bus (2*24Gbps)
- **Salience III Plus**
 - 768Gbps / 432 Mpps
 - 48Gbps/slot
- **Supervisor II+**
 - 64Gbps / 48Mpps – L2
- **Supervisor II+ 10GE**
 - 108Gbps / 81Mpps – L2
- **Supervisor IV**
 - 64Gbps / 48 Mpps
- **Supervisor V**
 - 96Gbps / 72Mpps
- **Supervisor V-10GE**
 - 136Gbps / 102Mpps

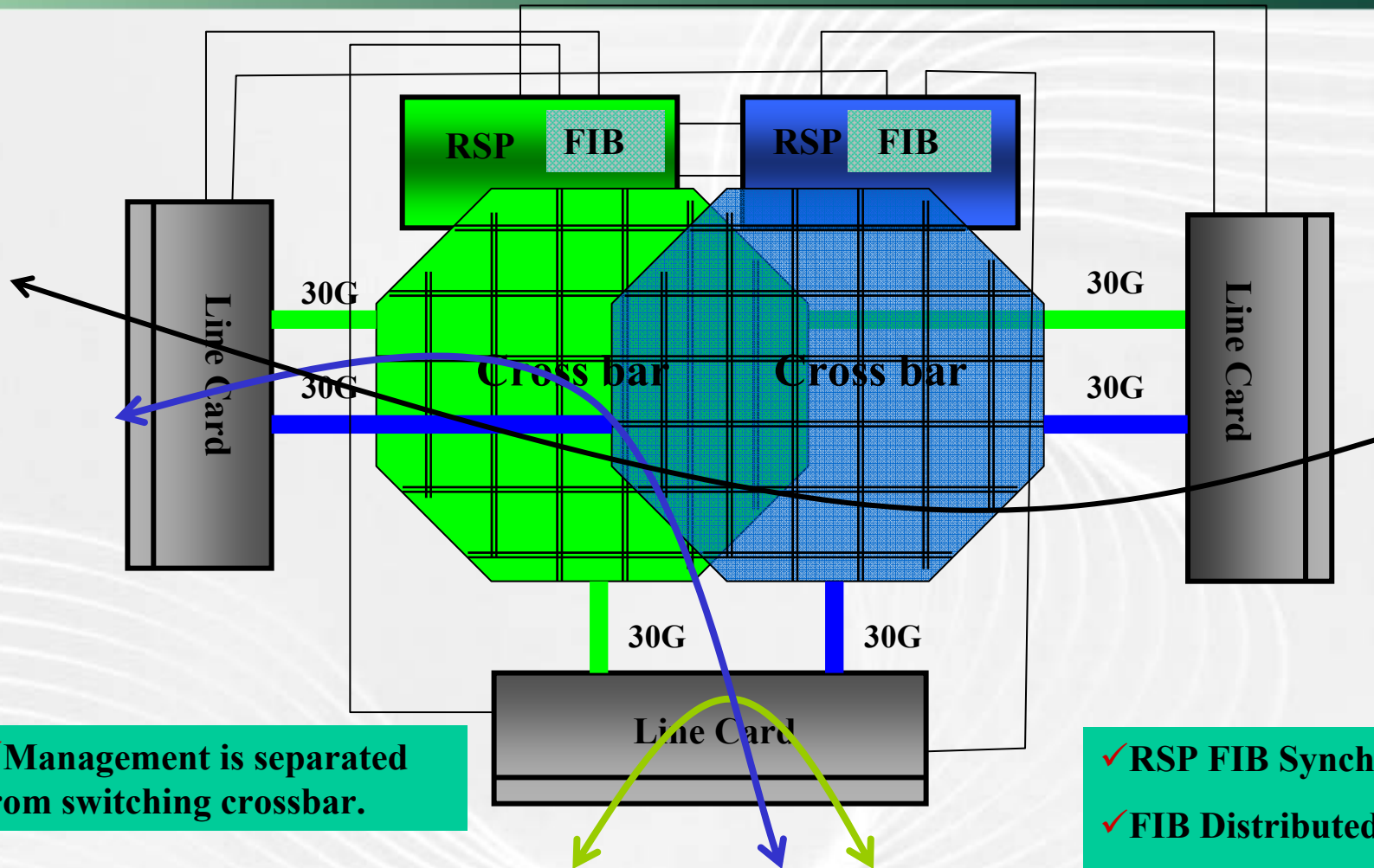
- RRPP – Rapid Ring Protection Protocol
 - Gyűrű topológia
 - 50ms konvergencia idő
 - Node szám független

- MPLS
 - L3/L2 VPN

Moduláris LAN switch-k

- S8500
 - S8505, S8508, S8512
- Interface-k
 - Standard
 - MPLS
 - IPv6
- Roadmap
 - PoE
 - Nagy portsűrűség
 - S8508V
 - Új vezérlő 1.44 Tbps
- Catalyst 6500
 - 6503, 6504
 - 6506, 6509
 - 6513
- Interface-k
 - 96 10/100 Ethernet
 - 48 GigabitEthernet
 - 4 TenGigabitEthernet
 - SIP, OSM
 - Service Module-k

S8500 architektúra



✓ Management is separated from switching crossbar.

✓ RSP FIB Synchronization
✓ FIB Distributed
✓ Distributed Forwarding

S8500

- Vezérlő
 - Külön minden chassis-hoz
 - 300Gbps / 178Mpps
 - 480Gbps / 285Mpps
 - 720Gbps / 432Mpps

Catalyst 6500/7600

- Supervisor2
 - 32Gbps – 256Gbps
 - 15Mpps – 210Mpps
- Supervisor32
 - 32Gbps
 - 15Mpps
- Supervisor720
 - 15Mpps – 400Mpps
 - 720Gbps – 2x20Gbps/slot

Access Router-ek - Fix

- AR 18-1x

- Serial/ISDN/E1 uplink

- 1FE



- AR 18-2x

- Ethernet uplink

- 4 FE



- AR 18-3x

- ADSL uplink

- 4 FE



- Cisco 800 series

- Fix

- Cisco 1700

- 2-3-4 slot WIC/VIC

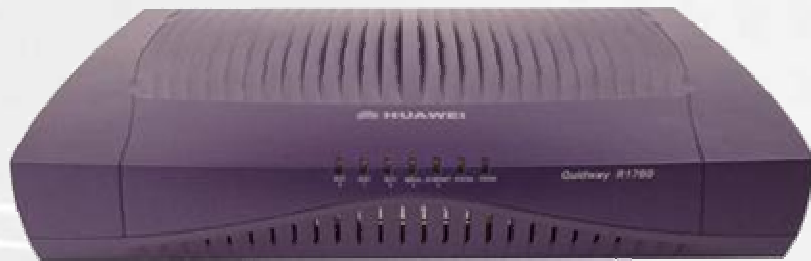
Access Router-ek

- AR 28-09/10/11
 - 1 MIM, 2 SIC, 1 fix serial
 - 60-70kpps
- AR 28-30/31
 - 3 MIM
 - 80kpps
- AR 28-40/80
 - 4/8 MIM
 - 90-100kpps
- Cisco 1800
 - Wireless support
 - Up to 75kpps
- Cisco 2600
 - 1 NM, 2-3 WIC
 - 15-70kpps
- Cisco 2800
 - 90-220kpps
- Cisco 3600
 - 2-4 NM
 - 20-70kpps

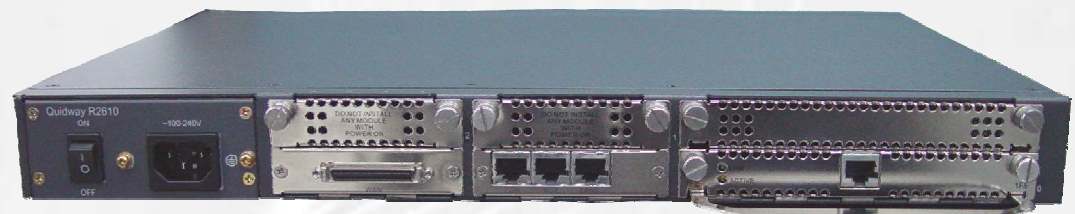
AR 28-09/1x



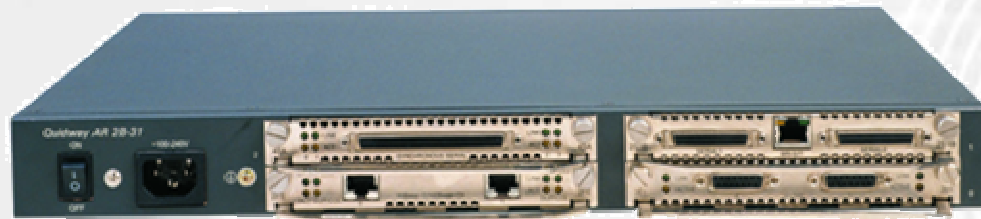
AR 28-09



AR 28-1x



AR 28-3x/40/80



AR 28-3x



AR 28-40

AR 28-80



- Smart Interface Card
 - Soros, ISDN, E1
 - Analog Modem
 - Ethernet
 - Voice
- Multi-Functional Interface Module
 - Ethernet (1-2 port)
 - ADSL, Soros, ISDN, E1
 - E3, chSTM-1, STM-1
 - ATM

 - Voice – FXS, FXO, E1
 - Roadmap: ISDN-BRI
 - Encryption

- QoS
 - CBWFQ, CAR, GTS, WRED

- Routing
 - RIP, OSPF, BGP, VRRP, PIM, IGMP

- Service
 - MPLS, MPLS/VPN, VoIP, IPSec

AR 46-xx

- AR 46-20/40/80
 - 2/4/8 MIM
- RPU
 - 2 10/100 Ethernet
 - 350kpps
- E-RPU
 - 3 10/100/1000 Ethernet
 - 1 Mpps
- Cisco 3725/3745
 - 2 10/100 Ethernet
 - 2-4 NM, 3 WIC, 2 AIM
 - 120-250kpps
- Cisco 3825/3845
 - 2 10/100/1000 Ethernet
 - 2-4 NM, 4 HWIC, 2 AIM
 - 350-500kpps

NetEngine – high end

- NE-20
 - ~4.5Mpps
 - 2-4-8 slot
 - NP architektúra
 - 3 HIC

- Roadmap: NE-20E
 - ~6Mpps
 - 8 slot

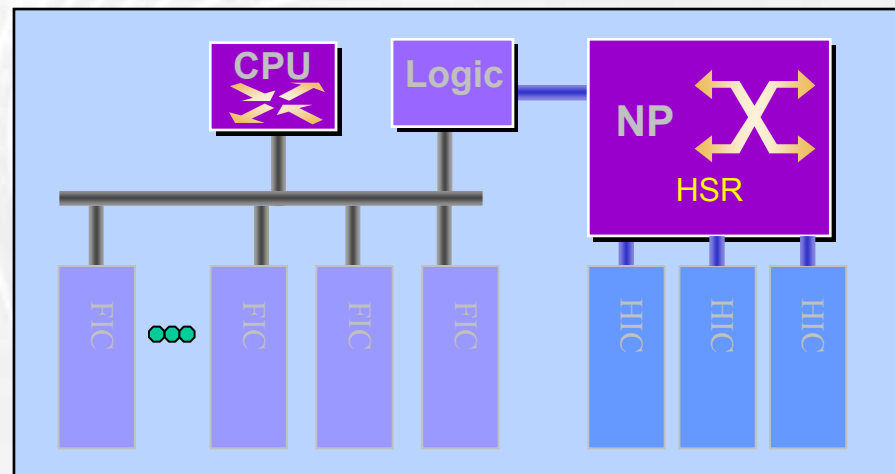
- Cisco 7200
 - ~1Mpps
 - 4-6 slot
 - 3 10/100/1000 Ethernet

- Cisco 7301
 - ~1Mpps
 - 1 slot
 - 3 10/100/1000 Ethernet

- Cisco 7304
 - NPE-G100 ~ 1Mpps
 - NSE-100 ~ 3.5Mpps
 - 4 slot
 - 2 – 3 10/100/1000 Ethernet

NE20 architektúra

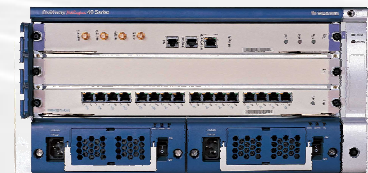
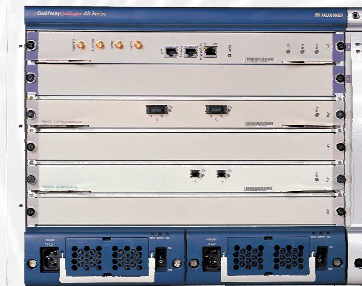
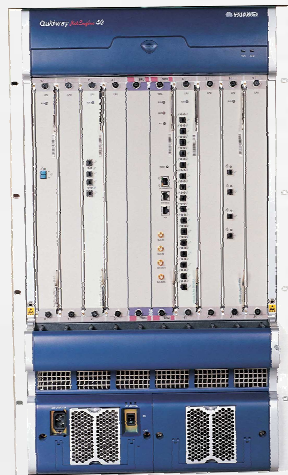
- HIC
 - High-speed interface Card
 - Maximum 3!
- FIC
 - Flexible interface card
- Forwarding
 - NP



NetEngine – GSR/USR

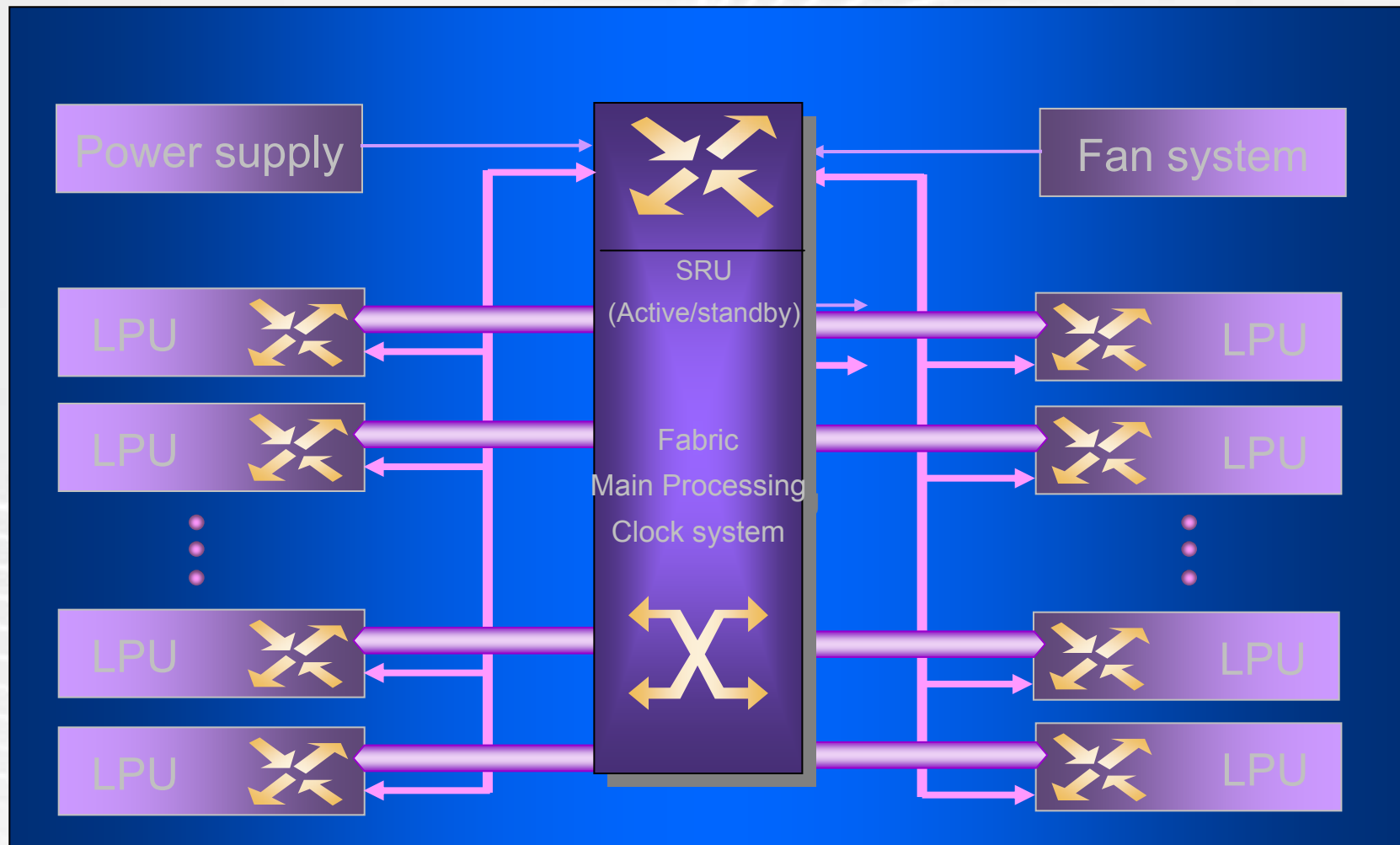
- NE40
 - 2-4-8 slot
 - 6Mpps/slot
- NE80
 - 16 slot
 - 6Mpps/slot
- NE40E
 - 8 slot
 - 2*10Gbps/slot
- NE80E
 - 16 slot
 - 10Gbps/slot
- Cisco 7600
 - 40Gbps/slot
 - 15Mpps – 400Mpps
- Cisco 120xx
 - 2.5Gbps/slot
- Cisco 124xx
 - 10Gbps/slot
- Cisco 128xx
 - 40Gbps/slot

NE40 series



	NE40-8	NE40-4	NE40-2
Throughput	64G non-block switch, redundant	32G non-block switch, redundant	16G non-block switch
Performance	48Mpps	24Mpps	12Mpps
Interface Slots	8	4	2

NE40 architektúra



NE40 feature-k

- Routing
 - RIP, OSPF, IS-IS
 - BGP ~1.8M prefix
- MPLS
 - VPN
 - AToM
 - VPLS
 - L2 VPN
 - Martini
 - Kompella
- Multicast
 - IGMP, PIM, MSDP
 - 64k
- QoS
 - DiffServ
- NAT
- IPv6

NE40 interface-k

- Ethernet
 - 4port GE LAN/WAN
 - 8/16/32 port FE LAN/WAN
- SDH
 - 1port STM-16, RPR
 - 2port STM-4
 - 4/8port STM-1
 - 2/4port chSTM-1
 - 8port E1
- ATM
 - 8port STM-1
- LPUF
 - FE, GE, chE1, E3, ATM, PoS
- NAT
 - 1M session
 - 1Gbps
- NetStream
 - ~Cisco Netflow

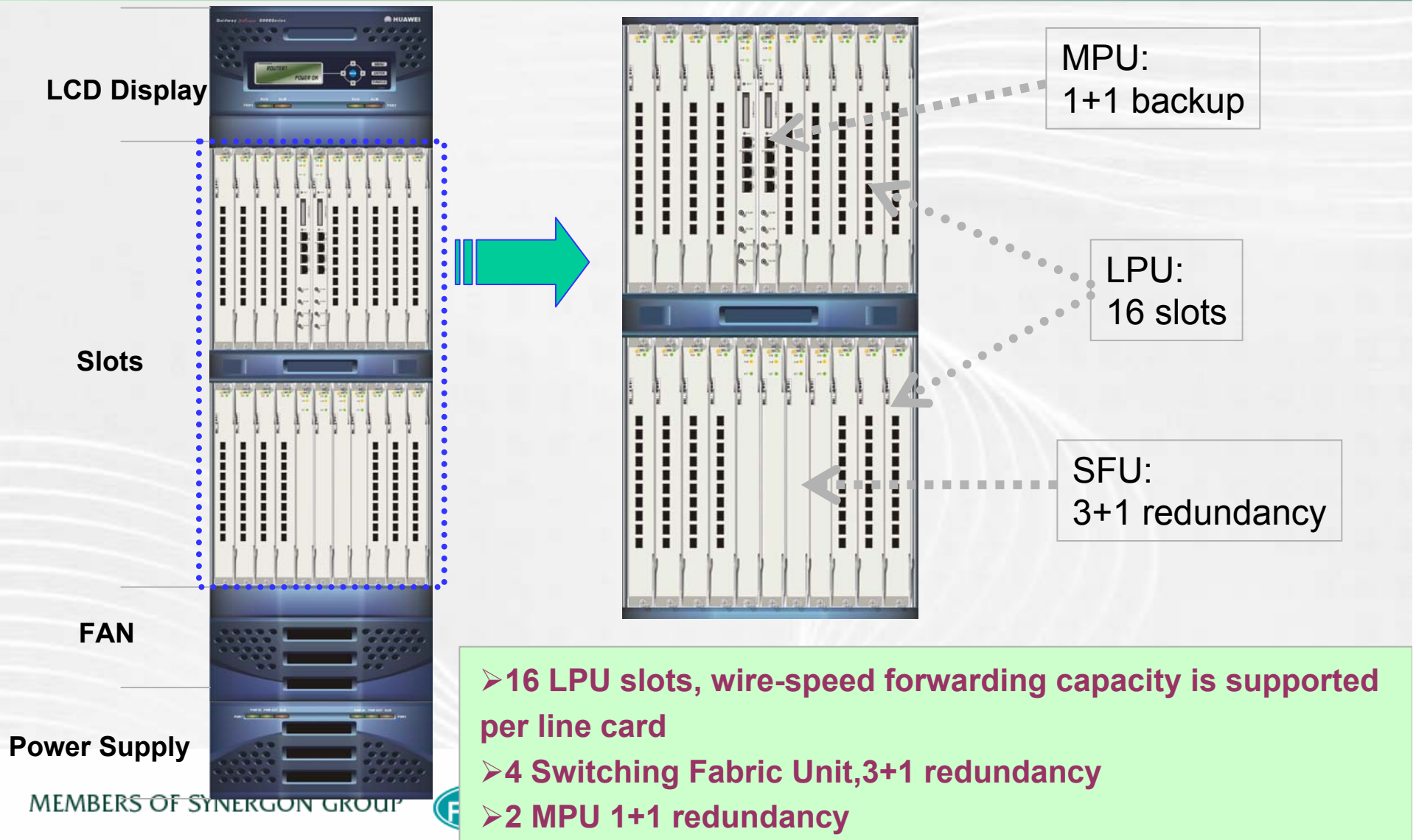
■ NE5000E

- 16 slot
- 40Gbps/slot
- 1.28Tbps
- 1600Mpps
- 64 cascade
 - 80Tbps
- Switching Fabric
 - 3+1
- Jelenleg kettő cascade
- NE80E LC kompatibilis

■ CRS-1

- 16 slot
- 40Gbps/slot
- 1.2Tbps
- 1600Mpps
- 72 cascade
 - 92Tbps
- Switching Fabric
 - 7+1

NE5000E



Huawei Portfolio

- Datacom
 - LAN Switch
 - Access Router
 - NetEngine
 - BRAS
 - Firewall
 - Access Server
- Access Network
 - CPE
 - DSLAM
- Optical Transport
 - SDH, DWDM, CWDM
- Video Communication
- Wireless
 - 3G
 - WiMax
 - WLAN
- NGN

Kérdések & Válaszok

Balla Attila
balla.attila@synergon.hu